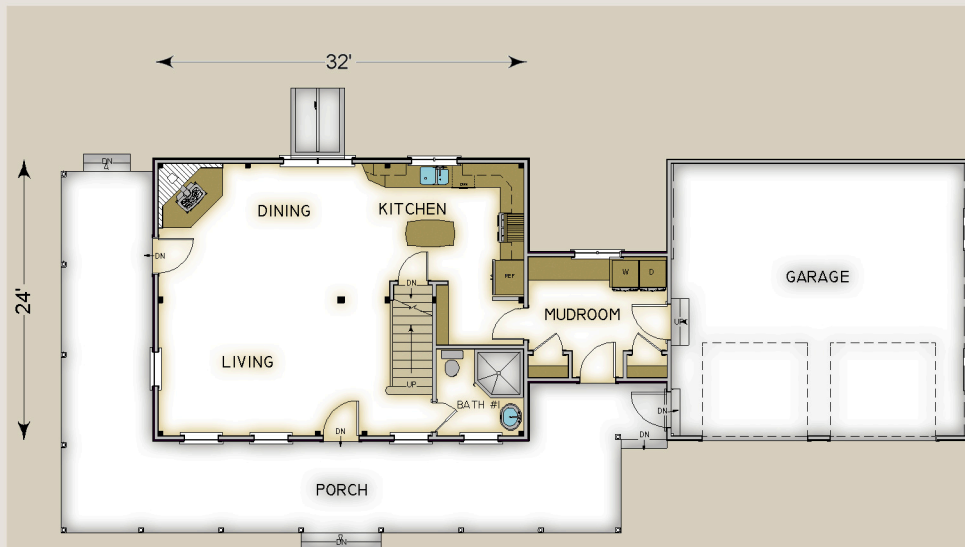


Plan #3650 1668 Total S.F.



**HABITAT FRAME NOTES:**

FULL EXPOSURE WALL SYSTEM ON MAIN LEVEL  
 CONVENTIONALLY FRAMED WALLS ON UPPER LEVEL  
 BEAMED MID-FLOOR SYSTEM  
 PLASTER AND ACCENT BEAM ROOF SYSTEM THROUGH OUT UPPER LEVEL  
 CATHEDRAL CEILINGS W/ TIMBER COLLAR TIES OVER BEDROOMS  
 GARAGE AND CONNECTOR BY OTHERS



**MAIN LEVEL**

KITCHEN	11'-6" x 15'-6"
DINING	20'-0" x 11'-6"
LIVING	20'-0" x 11'-6"
BATH #1	7'-6" x 7'-6"
MUDROOM	12'-0" x 8'-0"
PORCH	48'-0" x 8'-0"

**UPPER LEVEL**

MASTER BEDROOM	13'-0" x 11'-6"
WALK-IN CLOSET	6'-0" x 7'-6"
BEDROOM #1	13'-0" x 11'-6"
LOFT	15'-6" x 10'-0"
BATH #2	7'-6" x 13'-0"