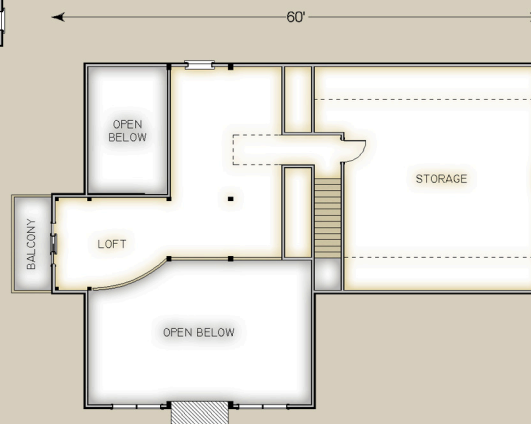


Plan #3654 2556 Total S.F.



HABITAT FRAME NOTES:

- FULL EXPOSURE WALL SYSTEM
- PLASTER AND BEAM MID-FLOOR SYSTEM BETWEEN MAIN AND UPPER LEVEL
- BEAMED ROOF SYSTEM OVER GREAT ROOM, LOFT, MASTER SUITE AND ENTRY PORCH
- FLAT LINER ROOF SYSTEM OVER SCREEN PORCH
- PLASTER AND ACCENT BEAM ROOF SYSTEM OVER STORAGE

MAIN LEVEL

- GREAT ROOM 27'-4" x 14'-1"
- KITCHEN 19'-9" x 11'-4"
- MASTER BEDROOM 13'-6" x 15'-8"
- MASTER BATH 9'-6" x 8'-0"
- WALK-IN CLOSET 4'-0" x 3'-8"
- WALK-IN CLOSET 7'-0" x 5'-0"
- ENTRY 6'-0" x 12'-3"
- LAUNDRY 7'-0" x 7'-2"
- LAV. 7'-0" x 3'-0"
- BEDROOM #1 16'-9" x 14'-9"
- BATH #1 6'-6" x 12'-3"
- WALK-IN CLOSET 6'-0" x 8'-0"
- SCREEN PORCH 7'-0" x 14'-0"
- ENTRY PORCH 8'-0" x 6'-0"
- SUN DECK BY OTHERS

UPPER LEVEL

- LOFT 13'-8" x 23'-4"
- STORAGE 24'-0" x 19'-4"
- BALCONY 12'-0" x 5'-0"