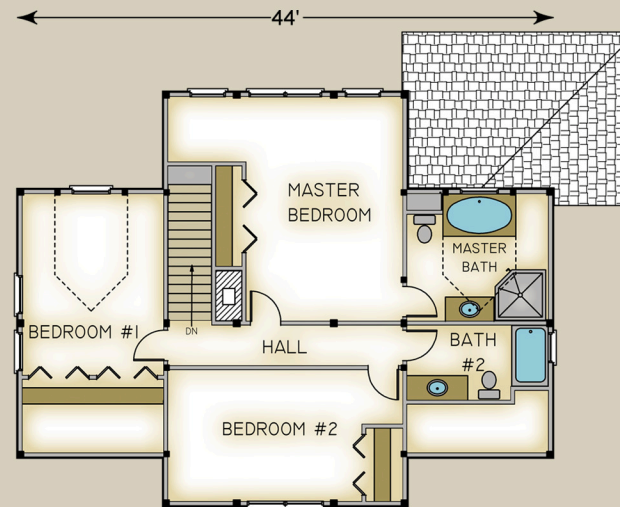
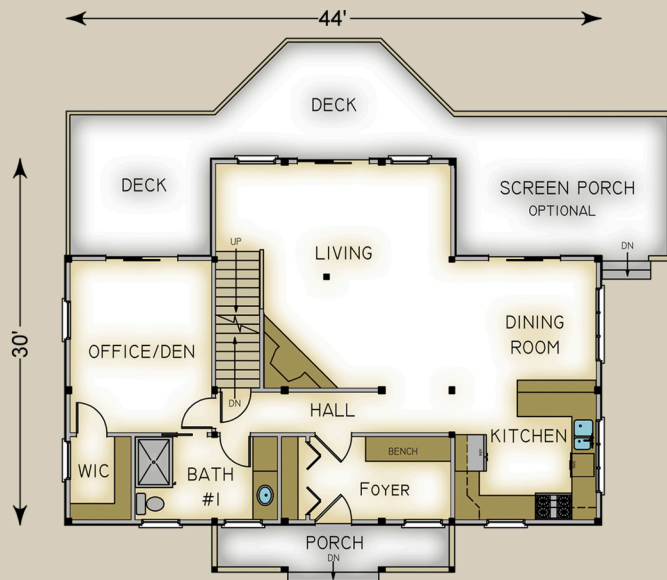


*Balsam Mountain* 2228 Total S.F.



**HABITAT FRAME NOTES:**

- BEAMED FRAME SYSTEM
- PLASTER AND BEAM MID-FLOOR SYSTEM
- BEAMED ROOF SYSTEM OVER CENTER SECTION
- PLASTER & ACCENT BEAM ROOF SYSTEM OVER WINGS
- 9'-0" PLATE BEAM HEIGHT ON MAIN LEVEL

**MAIN LEVEL**

|                |                 |
|----------------|-----------------|
| LIVING         | 20'-0" x 18'-6" |
| KITCHEN        | 12'-0" x 11'-0" |
| DINING         | 12'-0" x 11'-0" |
| OFFICE/DEN     | 12'-0" x 14'-0" |
| WALK-IN CLOSET | 5'-0" x 7'-0"   |
| FOYER          | 11'-6" x 7'-0"  |
| BATH #1        | 12'-0" x 7'-0"  |
| ENTRY PORCH    | 20'-0" x 4'-0"  |
| SCREEN PORCH   | 18'-0" x 12'-0" |
| SUN DECK       | BY OTHERS       |

**UPPER LEVEL**

|                |                 |
|----------------|-----------------|
| BEDROOM #1     | 12'-0" x 13'-0" |
| BEDROOM #2     | 20'-0" x 11'-0" |
| MASTER BEDROOM | 15'-0" x 9'-0"  |
| MASTER BATH    | 12'-0" x 10'-6" |
| BATH #2        | 12'-0" x 6'-0"  |
| HALL           | 19'-6" x 3'-6"  |