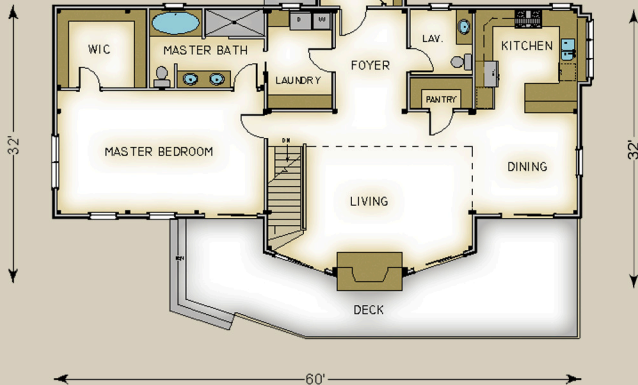
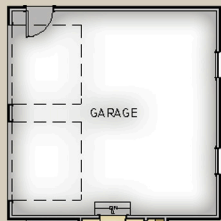


Plan #3539 2920 Total S.F.



HABITAT FRAME NOTES:

- FULL EXPOSURE WALL SYSTEM
- PLASTER & BEAM MID FLOOR SYSTEM
- 3'-0" KNEE WALL THROUGH OUT
- BEAMED ROOF SYSTEM OVER LIVING AND LOFT
- PLASTER & ACCENT BEAM ROOF SYSTEM OVER WINGS
- CONVENTIONALLY FRAMED GARAGE AND CONNECTOR BY OTHERS
- 10 FT BASEMENT HEIGHT

MAIN LEVEL

- MUDROOM 7'-0" x 12'-0"
- FOYER 8'-0" x 11'-6"
- LAUNDRY 7'-6" x 11'-6"
- LAV. 7'-0" x 7'-6"
- PANTRY 7'-0" x 3'-6"
- KITCHEN 12'-0" x 11'-6"
- DINING 12'-0" x 11'-6"
- LIVING 19'-0" x 14'-0"
- MASTER BEDROOM 23'-6" x 14'-0"
- MASTER BATH 13'-0" x 9'-0"
- WALK-IN CLOSET 10'-0" x 9'-0"
- PORCH 6'-0" x 12'-0"
- SUN DECK BY OTHERS

UPPER LEVEL

- LOFT 14'-0" x 15'-6"
- BEDROOM #1 18'-0" x 18'-0"
- BATH #1 8'-0" x 8'-6"
- BATH #2 9'-0" x 11'-6"
- BEDROOM #2 11'-6" x 18'-0"