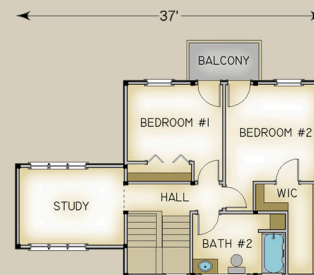


# Plan #3570 2550 Total S.F.



## HABITAT FRAME NOTES:

FULL EXPOSURE WALL SYSTEM IN LIVING  
STANDARD WALL SYSTEM THROUGH OUT REMAINDER  
PLASTER AND BEAM MID-FLOOR SYSTEM  
PLASTER AND ACCENT BEAM ROOF SYSTEM OVER UPPER LEVEL, AND MASTER SUITE  
BEAMED ROOF SYSTEM OVER LIVING, DINING, STUDY AND PORCH  
LINER ROOF SYSTEM OVER SCREEN PORCH  
CONVENTIONAL GARAGE BY OTHERS  
8x8 PORCH POSTS

## MAIN LEVEL

KITCHEN 17'-0" x 12'-0"  
DINING 13'-6" x 14'-0"  
LIVING 21'-6" x 21'-6"  
WALK-IN CLOSET 3'-6" x 7'-6"  
MASTER BEDROOM 15'-6" x 16'-0"  
WALK-IN CLOSET 4'-6" x 8'-0"  
WALK-IN CLOSET 8'-0" x 6'-0"  
MASTER BATH 8'-0" x 8'-0"  
LAUNDRY 6'-0" x 12'-0"  
ENTRY 16'-0" x 8'-0"  
LAV. 6'-0" x 5'-0"  
WALK-IN CLOSET 5'-0" x 5'-0"  
PORCH 8'-0" x 6'-0"  
SCREEN PORCH 10'-0" x 14'-0"  
BY OTHERS

## UPPER LEVEL

BEDROOM #1 11'-6" x 9'-6"  
BEDROOM #2 11'-6" x 11'-6"  
WALK-IN CLOSET 8'-0" x 3'-6"  
HALL 11'-6" x 3'-6"  
BATH #2 11'-0" x 7'-6"  
STUDY 12'-6" x 9'-6"