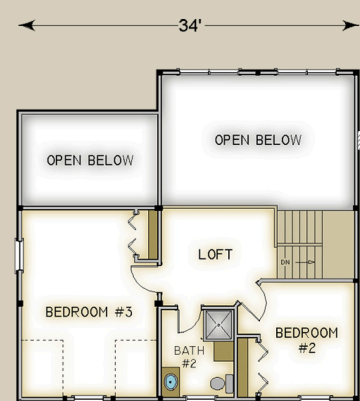


Plan #3609 2030 Total S.F.



HABITAT FRAME NOTES:

- STANDARD WALL SYSTEM
- BEAMED MID-FLOOR SYSTEM
- BEAMED ROOF SYSTEM w/COLLAR TIES OVER MAIN SECTION
- BEAMED ROOF SYSTEM OVER DINING AND ENTRY PORCH
- PLASTER AND ACCENT BEAM ROOF SYSTEM OVER REMAINDER
- LINER ROOF SYSTEM OVER SCREEN PORCH

MAIN LEVEL

- KITCHEN 14'-0" x 10'-0"
- DINING 14'-0" x 9'-0"
- MUDROOM 10'-0" x 7'-0"
- FOYER 6'-0" x 12'-0"
- BATH #1 5'-0" x 9'-6"
- BEDROOM #1 11'-6" x 11'-6"
- LIVING 19'-6" x 13'-0"
- MASTER BEDROOM 15'-6" x 14'-0"
- WIC 5'-6" x 3'-6"
- MASTER BATH 10'-0" x 7'-0"
- PORCH 8'-0" x 8'-0"
- SUN DECKS BY OTHERS

UPPER LEVEL

- LOFT 11'-6" x 10'-0"
- BEDROOM #2 9'-6" x 11'-6"
- BEDROOM #3 13'-6" x 13'-0"
- BATH #2 7'-6" x 9'-0"