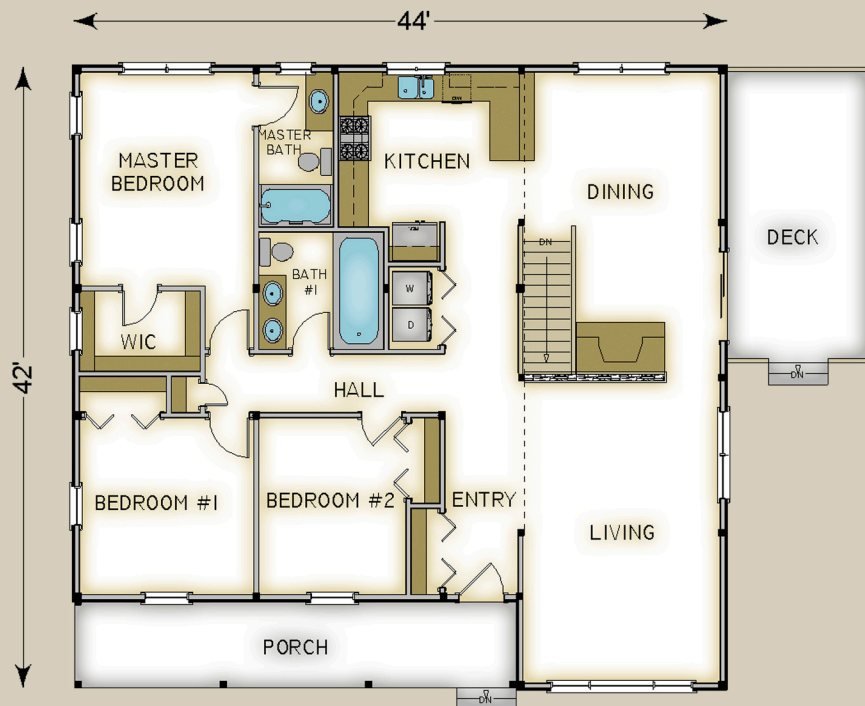


Plan #3612 1668 Total S.F.



HABITAT FRAME NOTES:

STANDARD WALL SYSTEM

BEAMED ROOF SYSTEM w/COLLAR TIES OVER LIVING AND DINING

PLASTER AND ACCENT BEAM ROOF SYSTEM OVER REMAINDER

FLAT LINER ROOF SYSTEM OVER PORCH

LINER CEILING OVER KITCHEN, HALL AND ENTRY

MAIN LEVEL

KITCHEN	12'-6" x 10'-6"
DINING	13'-6" x 20'-6"
LIVING	13'-6" x 21'-0"
ENTRY	5'-0" x 12'-0"
HALL	21'-6" x 4'-0"
BATH #1	8'-6" x 8'-0"
BEDROOM #1	12'-0" x 12'-0"
BEDROOM #2	10'-0" x 12'-0"
MASTER BEDROOM	12'-0" x 14'-6"
MASTER BATH	5'-0" x 10'-6"
WALK-IN CLOSET	8'-0" x 5'-6"
PORCH	30'-0" x 6'-0"
SUN DECK	BY OTHERS