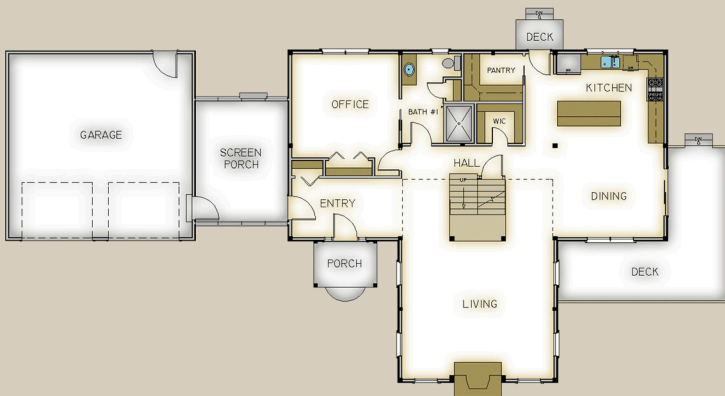


Plan #3622 2571 Total S.F.



84'



42'

48'

42'



HABITAT FRAME NOTES:

- STANDARD WALL SYSTEM
- PLASTER AND BEAM MID-FLOOR SYSTEM
- BEAMED ROOF SYSTEM OVER LIVING AND ENTRY PORCH
- LINER ROOF SYSTEM OVER MASTER BEDROOM
- PLASTER AND ACCENT BEAM ROOF SYSTEM OVER REMAINDER OF UPPER LEVEL
- CATHEDRAL CEILINGS OVER BEDROOM WINGS
- FLAT CEILINGS OVER LOFT, BATH #2 AND LAUNDRY
- CONVENTIONALLY FRAMED GARAGE AND SCREEN PORCH BY OTHERS

MAIN LEVEL

- KITCHEN 14'-0" x 11'-6"
- DINING 14'-0" x 11'-6"
- LIVING 19'-6" x 17'-0"
- HALL 19'-6" x 4'-0"
- WALK-IN CLOSET 6'-0" x 5'-0"
- PANTRY 7'-6" x 6'-0"
- BATH #1 7'-6" x 11'-6"
- OFFICE 13'-6" x 13'-0"
- ENTRY 14'-0" x 7'-6"
- PORCH 8'-0" x 6'-0"
- SCREEN PORCH 12'-0" x 18'-0"
- SUN DECK BY OTHERS

UPPER LEVEL

- MASTER BEDROOM 11'-6" x 16'-0"
- MASTER BATH 13'-6" x 7'-6"
- LAUNDRY 6'-0" x 8'-0"
- BATH #2 11'-0" x 8'-0"
- BEDROOM #1 13'-6" x 11'-6"
- BEDROOM #2 13'-6" x 11'-6"
- LOFT 9'-6" x 8'-0"