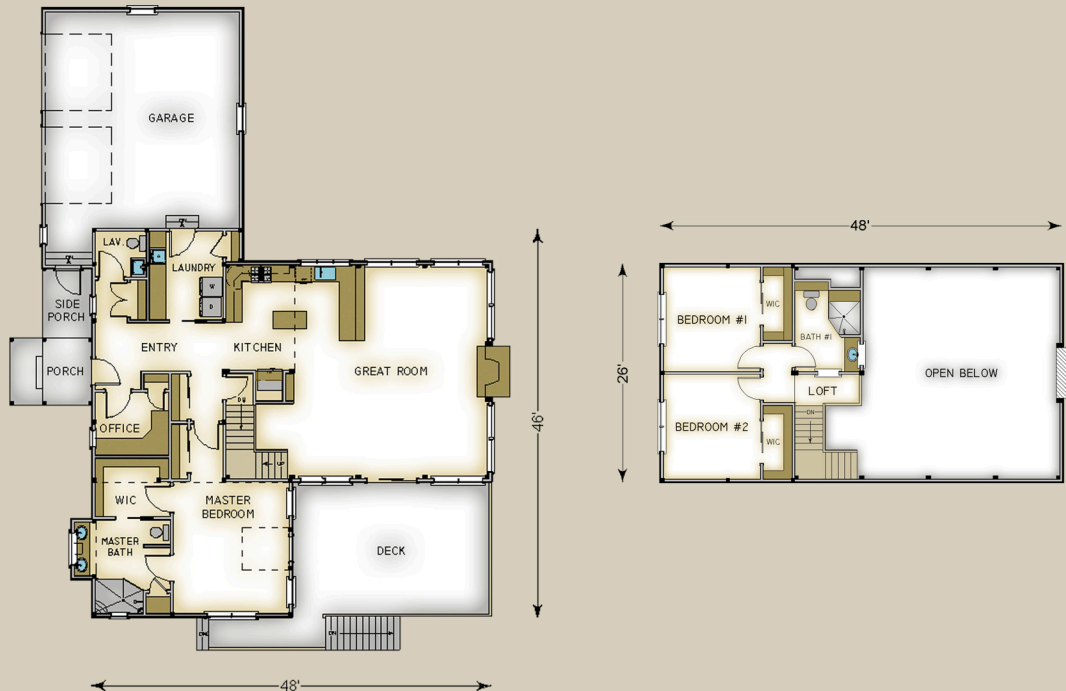


# Plan #3643 2310 Total S.F.



## HABITAT FRAME NOTES:

FULL EXPOSURE WALL SYSTEM IN GREAT ROOM  
 BEAMED WALL SYSTEM THROUGH OUT REMAINDER  
 PLASTER AND BEAM MID-FLOOR SYSTEM  
 BEAMED ROOF SYSTEM OVER GREAT ROOM, MASTER SUITE AND ENTRY PORCH  
 CONVENTIONAL ROOF SYSTEM w/FLAT CEILINGS OVER UPPER LEVEL  
 FLAT LINER ROOF SYSTEM OVER SIDE PORCH  
 CONVENTIONALLY FRAMED GARAGE BY OTHERS  
 2'-0" KNEE WALL OVER BATH #2 AND GREAT ROOM

## MAIN LEVEL

KITCHEN 16'-0" x 12'-6"  
 GREAT ROOM 16'-6" x 25'-6"  
 ENTRY 15'-6" x 6'-0"  
 LAUNDRY 9'-0" x 10'-6"  
 LAV. 6'-0" x 5'-6"  
 OFFICE 9'-0" x 7'-6"  
 MASTER BEDROOM 14'-0" x 15'-6"  
 MASTER BATH 9'-0" x 11'-0"  
 WALK-IN CLOSET 9'-0" x 7'-0"  
 PORCH 6'-0" x 8'-0"  
 SIDE PORCH 6'-0" x 8'-6"  
 SUN DECK BY OTHERS

## UPPER LEVEL

LOFT 9'-0" x 4'-0"  
 BEDROOM #1 11'-6" x 12'-6"  
 BEDROOM #2 11'-6" x 12'-6"  
 BATH #1 8'-0" x 10'-0"