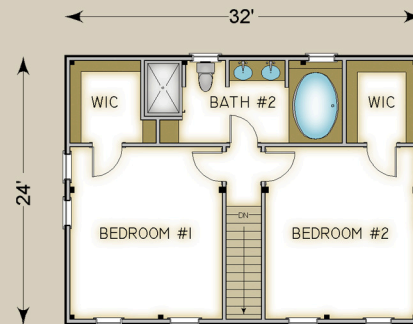
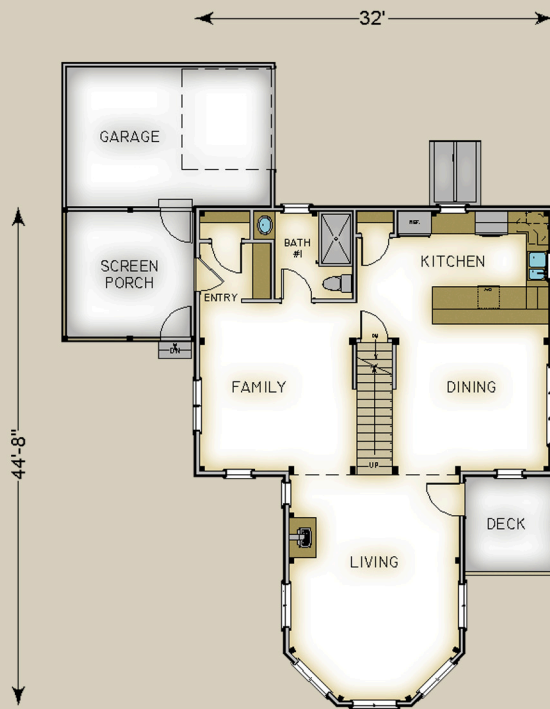


Plan #3653 1845 Total S.F.



HABITAT FRAME NOTES:

- FULL EXPOSURE WALL SYSTEM
- BEAMED MID-FLOOR SYSTEM BETWEEN MAIN AND UPPER LEVEL
- BEAMED ROOF SYSTEM
- 8'-4" PLATE BEAM HEIGHT IN CONSERVATORY
- CATHEDRAL LINER ROOF SYSTEM OVER SCREEN PORCH
- CONVENTIONALLY FRAMED GARAGE BY OTHERS

MAIN LEVEL

- ENTRY 6'-4" x 5'-0"
- FAMILY 13'-8" x 15'-0"
- BATH #1 7'-0" x 7'-10"
- KITCHEN 7'-3" x 11'-5"
- DINING 13'-8" x 11'-5"
- LIVING 15'-4" x 16'-0"
- SCREEN PORCH 12'-0" x 12'-0"
- SUN DECK BY OTHERS

UPPER LEVEL

- BEDROOM #1 13'-9" x 15'-6"
- WALK-IN CLOSET 6'-4" x 7'-5"
- BATH #2 9'-8" x 7'-5"
- BEDROOM #2 13'-9" x 15'-6"
- WALK-IN CLOSET 6'-5" x 7'-5"