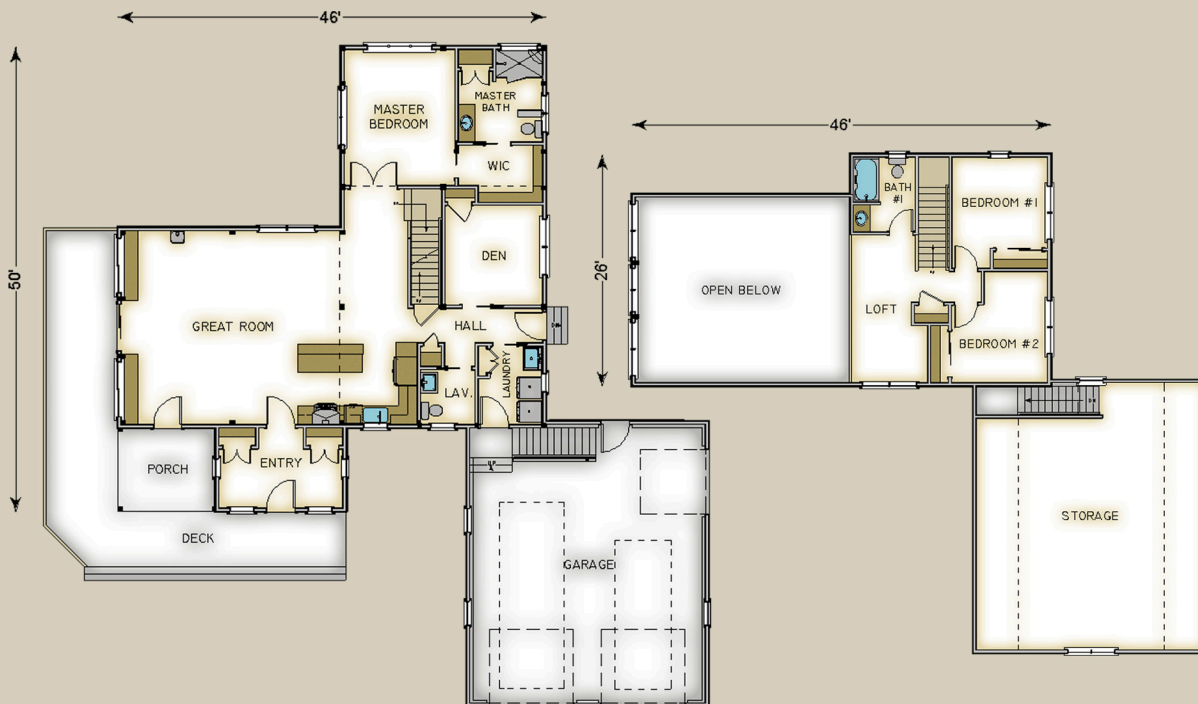


Plan #3696 2200 Total S.F.



HABITAT FRAME NOTES:

- FULL EXPOSURE WALL SYSTEM IN GREAT ROOM AND KITCHEN AREAS
- BEAMED WALL SYSTEM THROUGH OUT REMAINDER
- PLASTER AND BEAM MID-FLOOR SYSTEM
- BEAMED ROOF SYSTEM w/ TRUSS OVER GREAT ROOM
- BEAMED ROOF SYSTEM OVER PORCH
- LINER ROOF SYSTEM w/TIMBER COLLAR TIES OVER MASTER SUITE
- PLASTER AND ACCENT BEAM ROOF SYSTEM OVER REMAINDER
- CONVENTIONALLY FRAMED GARAGE BY OTHERS

MAIN LEVEL

- GREAT ROOM
- ENTRY
- HALL
- L.A.V.
- LAUNDRY
- DEN
- MASTER BEDROOM
- MASTER BATH
- WALK-IN CLOSET
- SUN DECK

UPPER LEVEL

- LOFT
- BEDROOM #1
- BEDROOM #2
- BATH #1

- 24'-0" x 21'-0"
- 13'-6" x 6'-6"
- 7'-0" x 17'-0"
- 6'-0" x 6'-0"
- 7'-0" x 8'-6"
- 10'-6" x 10'-6"
- 12'-0" x 14'-6"
- 9'-0" x 10'-0"
- 9'-0" x 6'-0"
- BY OTHERS
- 7'-0" x 16'-6"
- 10'-6" x 10'-6"
- 10'-6" x 12'-6"
- 7'-0" x 8'-6"