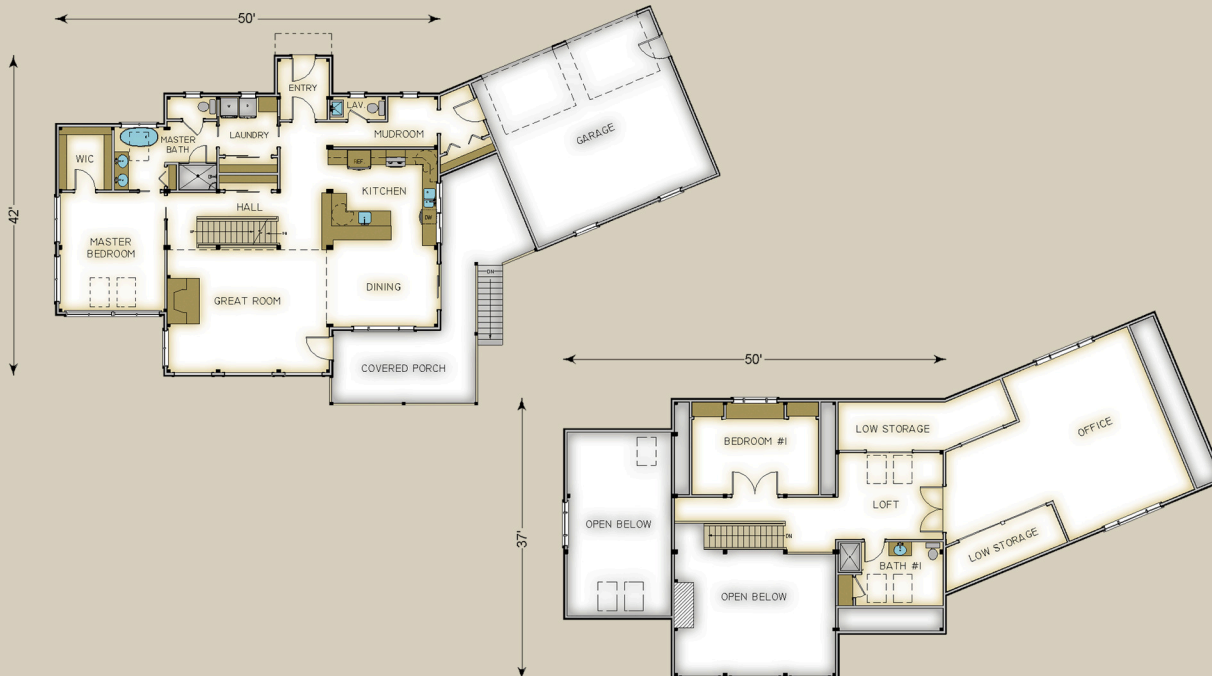


Plan #3698 4825 Total S.F.



**HABITAT FRAME NOTES:**

- FULL EXPOSURE WALL SYSTEM
- PLASTER & BEAM MID-FLOOR SYSTEM
- PLASTER AND ACCENT BEAM ROOF SYSTEM THROUGH OUT
- LINER ROOF SYSTEM OVER PORCHES
- 9'-0" FOUNDATION HEIGHT
- 3'-0" OVERHANGS AT PEAKS
- 18" OVERHANGS THROUGH OUT
- 3'-0" OVERHANGS AT PEAKS

**MAIN LEVEL**

- KITCHEN 14'-0" x 11'-6"
- DINING 14'-0" x 11'-6"
- GREAT ROOM 21'-6" x 17'-0"
- MASTER BEDROOM 14'-0" x 15'-6"
- WALK-IN CLOSET 7'-0" x 8'-0"
- MASTER BATH 13'-6" x 8'-6"
- LAUNDRY 7'-6" x 7'-6"
- ENTRY 7'-0" x 8'-0"
- LAV. 7'-0" x 3'-0"
- MUDROOM 12'-0" x 6'-6"
- COVERED PORCH 19'-6" x 10'-0"

**UPPER LEVEL**

- LOFT 14'-0" x 11'-6"
- BEDROOM #1 17'-0" x 12'-6"
- BATH #1 14'-0" x 8'-6"
- LOW STORAGE 23'-0" x 6'-0"
- LOW STORAGE 16'-0" x 5'-6"
- OFFICE 18'-0" x 23'-6"