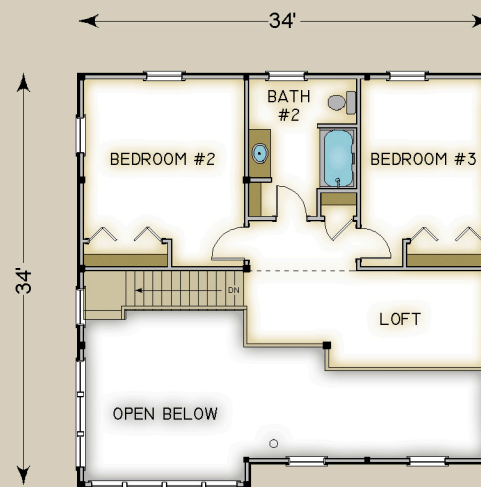


Plan #3709 2040 Total S.F.



HABITAT FRAME NOTES:

- BEAMED WALL SYSTEM
- PLASTER AND BEAM MID-FLOOR SYSTEM
- BEAMED ROOF SYSTEM OVER LIVING AND LOFT
- PLASTER AND ACCENT BEAM ROOF SYSTEM OVER REMAINDER
- CONVENTIONAL ROOF SYSTEM OVER MUDROOM
- LINER ROOF SYSTEM OVER ENTRY PORCH
- 9'-0" MAIN LEVEL PLATE BEAM HEIGHT
- 7'-0" UPPER LEVEL PLATE BEAM HEIGHT
- 9'-0" FOUNDATION HEIGHT

MAIN LEVEL

KITCHEN	20'-0" x 12'-0"
DINING	20'-0" x 11'-0"
PANTRY	5'-0" x 6'-0"
MUDROOM	12'-0" x 7'-0"
LAUNDRY	6'-0" x 6'-0"
LAV.	3'-0" x 8'-0"
BEDROOM #1	13'-6" x 13'-6"
BATH #1	7'-6" x 8'-0"
LIVING	13'-6" x 14'-0"
PORCH	11'-0" x 7'-0"
SUN DECK	BY OTHERS

UPPER LEVEL

LOFT	13'-0" x 8'-0"
BEDROOM #2	13'-6" x 14'-6"
BEDROOM #3	10'-6" x 15'-6"
BATH #2	9'-0" x 9'-0"