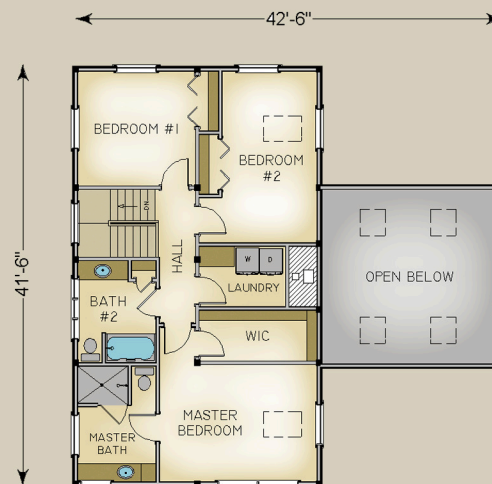
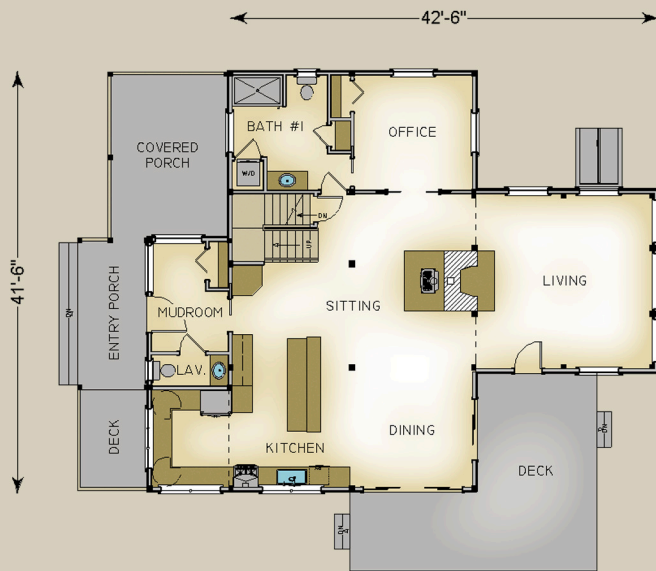


Plan #3712 2460 Total S.F.



HABITAT FRAME NOTES:

- BEAMED WALL SYSTEM
- FULL EXPOSURE WALL SYSTEM IN LIVING ROOM
- PLASTER AND BEAM MID-FLOOR SYSTEM
- 9'-0" MAIN LEVEL PLATE BEAM HEIGHT
- 10'-0" LIVING ROOM PLATE BEAM HEIGHT
- BEAMED ROOF SYSTEM OVER LIVING, LAV & MUDROOM
- CATHEDRAL LINER ROOF SYSTEM OVER ENTRY PORCH
- FLAT LINER ROOF SYSTEM OVER COVERED PORCH
- PLASTER AND ACCENT BEAM ROOF SYSTEM OVER UPPER LEVEL
- A-SERIES WINDOWS AND DOORS

MAIN LEVEL

- KITCHEN 12'-0" x 15'-6"
- DINING 12'-0" x 17'-6"
- SITTING ROOM 12'-0" x 11'-6"
- LAV. 7'-0" x 3'-0"
- MUDROOM 7'-6" x 11'-0"
- OFFICE 12'-0" x 12'-0"
- BATH #1 7'-6" x 11'-6"
- LIVING 18'-0" x 17'-6"
- ENTRY PORCH 7'-0" x 15'-0"
- COVERED PORCH 12'-0" x 16'-6"
- SUN DECKS BY OTHERS

UPPER LEVEL

- BEDROOM #1 12'-0" x 11'-6"
- BEDROOM #2 9'-6" x 17'-0"
- HALL 3'-6" x 13'-6"
- BATH #2 8'-0" x 10'-6"
- LAUNDRY 8'-6" x 6'-0"
- MASTER BEDROOM 16'-0" x 11'-6"
- MASTER BATH 8'-0" x 11'-6"
- WALK-IN CLOSET 12'-0" x 5'-6"