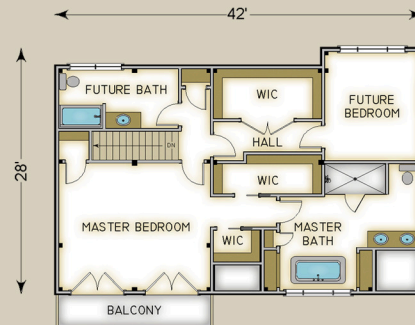
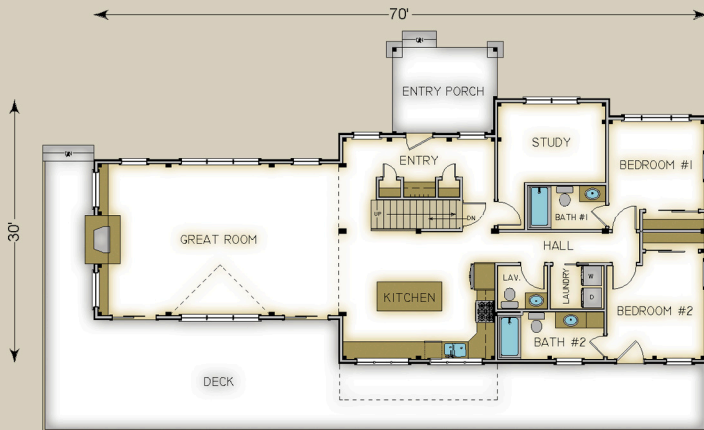


Plan #3724 2765 Total S.F.



HABITAT FRAME NOTES:

FULL EXPOSURE WALL SYSTEM w/6x10 MAIN LEVEL PLATE BEAMS
 PLASTER & BEAM MID-FLOOR SYSTEM w/6x10 JOISTS
 BEAMED ROOF SYSTEM OVER GREAT ROOM
 CONVENTIONAL ROOF OVER REMAINDER
 BEAMED ROOF OVER ENTRY PORCH
 9' FOUNDATION HEIGHT

MAIN LEVEL

KITCHEN 17'-6" x 14'-6"
 GREAT ROOM 28'-0" x 17'-6"
 ENTRY 17'-6" x 4'-6"
 STUDY 12'-6" x 9'-0"
 HALL 16'-6" x 3'-6"
 LAV. 5'-6" x 5'-0"
 LAUNDRY 6'-0" x 5'-0"
 BEDROOM #1 11'-0" x 10'-0"
 BATH #1 9'-0" x 5'-0"
 BEDROOM #2 11'-0" x 11'-0"
 BATH #2 12'-0" x 5'-6"
 ENTRY PORCH 12'-0" x 10'-0"
 SUN DECKS BY OTHERS

UPPER LEVEL

MASTER BEDROOM 17'-6" x 15'-0"
 WALK-IN CLOSET 5'-6" x 3'-6"
 WALK-IN CLOSET 12'-6" x 4'-6"
 MASTER BATH 16'-0" x 10'-0"
 HALL 12'-6" x 3'-6"
 FUTURE BATH 14'-0" x 7'-0"
 WALK-IN CLOSET 12'-6" x 6'-0"
 FUTURE BEDROOM 11'-0" x 12'-6"