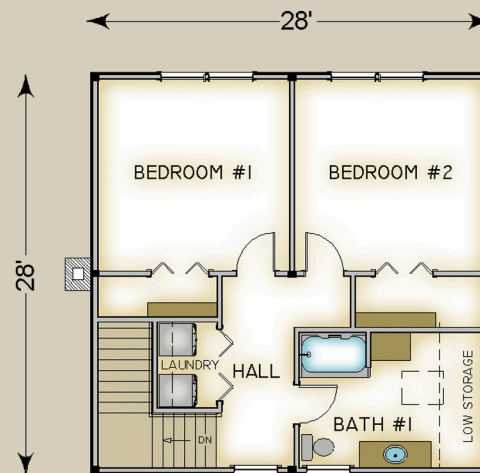


Plan #3739 1568 Total S.F.



HABITAT FRAME NOTES:

- BEAMED WALL SYSTEM
- BEAMED MID-FLOOR SYSTEM
- PLASTER & ACCENT BEAM ROOF SYSTEM
- 9'-0" PLATE BEAM ON MAIN LEVEL
- 4'-0" KNEE WALL
- SOLID FIR GIRDERS
- 9'-0" FOUNDATION HEIGHT

MAIN LEVEL

LIVING	13'-6" x 13'-6"
DINING	13'-6" x 13'-6"
KITCHEN	11'-0" x 13'-6"
ENTRY	6'-0" x 10'-0"
LAV.	3'-0" x 6'-0"
SUN DECKS	BY OTHERS

UPPER LEVEL

BEDROOM #1	13'-6" x 13'-6"
BEDROOM #2	13'-6" x 13'-6"
HALL	5'-0" x 13'-6"
LAUNDRY	4'-0" x 6'-0"
BATH #1	13'-0" x 9'-6"