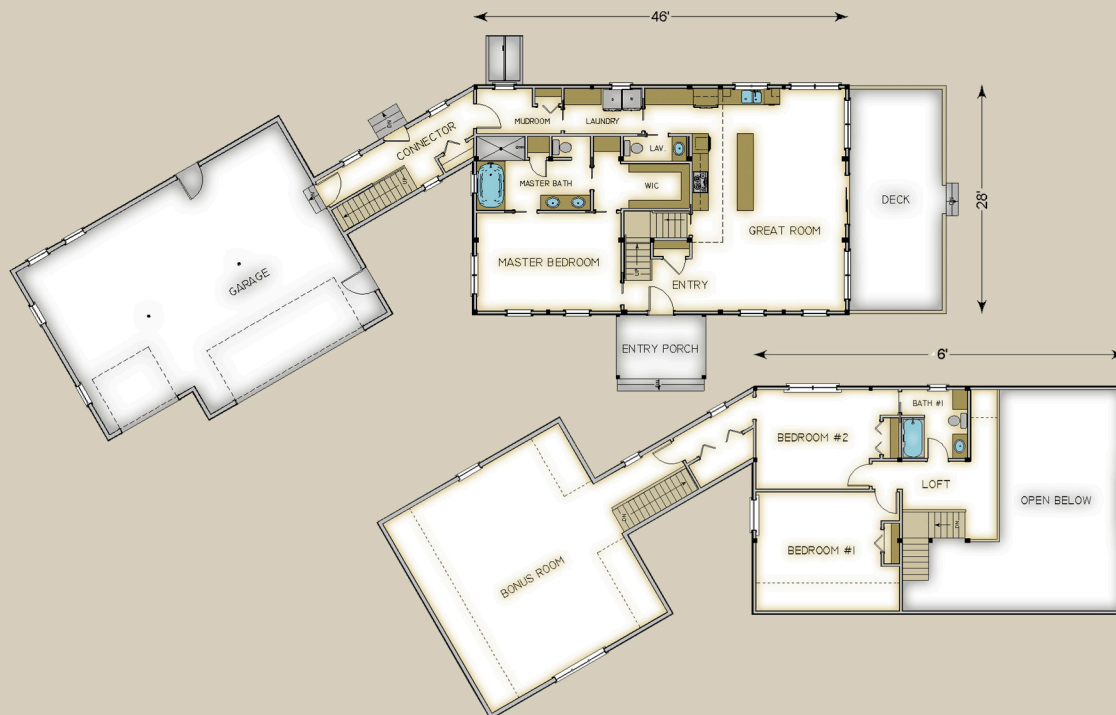


Plan #3745 1910 Total S.F.



HABITAT FRAME NOTES:

- BEAMED WALL FRAME SYSTEM
- PLASTER & BEAM MID-FLOOR SYSTEM
- PLASTER & ACCENT BEAM ROOF SYSTEM OVER UPPER BEDROOMS & BATH #1
- BEAMED ROOF SYSTEM OVER GREAT ROOM, LOFT AND BATH #1
- LINER PORCH SYSTEM WITH GABLE TRUSS
- CONNECTOR & GARAGE BY OTHERS

MAIN LEVEL

- GREAT ROOM 27'-6" x 19'-0"
- ENTRY 6'-6" x 8'-6"
- MASTER BEDROOM 12'-0" x 18'-0"
- WALK-IN CLOSET 5'-6" x 12'-0"
- MASTER BATH 9'-0" x 14'-0"
- LAV. 3'-0" x 8'-0"
- LAUNDRY 6'-0" x 10'-0"
- MUDROOM 5'-6" x 10'-6"
- CONNECTOR 7'-0" x 21'-0"
- ENTRY PORCH 11'-0" x 8'-0"
- SUN DECKS BY OTHERS

UPPER LEVEL

- LOFT 6'-0" x 12'-0"
- BEDROOM #1 11'-6" x 15'-6"
- BEDROOM #2 12'-6" x 15'-6"
- BATH #1 8'-6" x 8'-0"