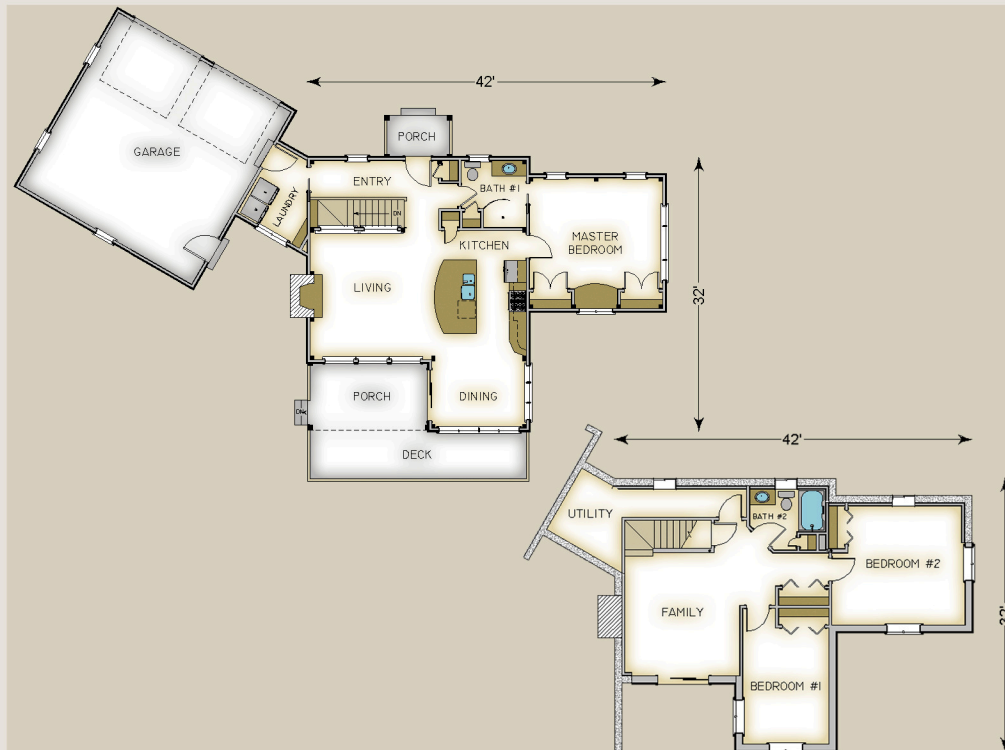


Plan #9104 2020 Total S.F.



HABITAT FRAME NOTES:

FULL EXPOSURE FRAME SYSTEM
 BEAMED ROOF SYSTEM THROUGH OUT
 BEAMED ROOF SYSTEM OVER PORCHES
 TIMBER TRUSSES OVER LIVING ROOM
 CONVENTIONALLY FRAMED CONNECTOR AND GARAGE BY OTHERS
 9'-0" PLATE HEIGHT IN MAIN SECTION
 18" ROOF OVERHANGS THROUGH OUT w/LINER SOFFIT
 8x8 PORCH POSTS

MAIN LEVEL

LAUNDRY 9'-4" x 6'-0"
 ENTRY 15'-0" x 4'-4"
 BATH #1 7'-8" x 5'-8"
 LIVING 14'-0" x 15'-2"
 KITCHEN 11'-0" x 15'-0"
 DINING 11'-0" x 7'-8"
 MASTER BEDROOM 15'-8" x 13'-0"
 ENTRY PORCH 8'-0" x 5'-0"
 REAR PORCH 14'-3" x 8'-0"
 SUN DECK BY OTHERS

LOWER LEVEL

FAMILY 13'-6" x 14'-6"
 UTILITY 8'-2" x 7'-6"
 BATH #2 5'-6" x 7'-2"
 BEDROOM #1 10'-0" x 13'-8"
 BEDROOM #2 13'-4" x 14'-0"