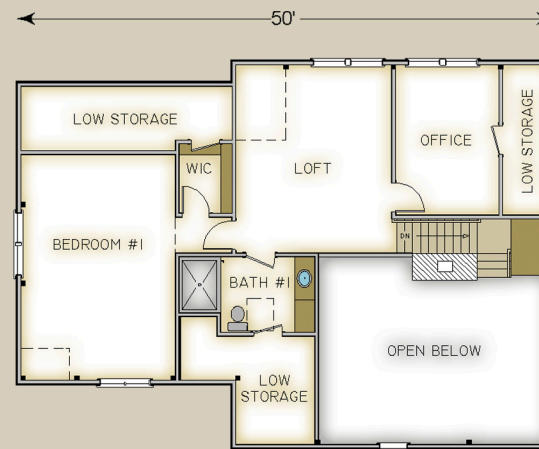


Plan #9105 2453 Total S.F.



HABITAT FRAME NOTES:

- FULL EXPOSURE WALL SYSTEM
- PLASTER AND BEAM MID-FLOOR SYSTEM
- w/6x10 JOISTS BETWEEN KITCHEN/DINING AND UPPER LEVEL
- 6x10 PLATE BEAMS IN MAIN AREAS
- CONVENTIONALLY FRAMED ROOF SYSTEM
- BEAMED ROOF SYSTEM OVER VERANDA AND SIDE PORCH
- SOLID FIR GIRDERS
- 8x8 PORCH POSTS
- 2'-0" OVERHANGS THROUGH OUT w/1x6 T&G SOFFITS

MAIN LEVEL

- LIVING 21'-8" x 16'-6"
- KITCHEN 14'-6" x 14'-0"
- DINING 14'-6" x 14'-0"
- MUDROOM 7'-4" x 7'-0"
- LAV. 7'-4" x 4'-0"
- MASTER BEDROOM 19'-8" x 10'-6"
- MASTER BATH 12'-7" x 10'-6"
- WALK IN CLOSET 6'-8" x 5'-4"
- VERANDA 10'-0" x 8'-0"
- SIDE PORCH 12'-0" x 20'-0"
- REAR PORCH 20'-0" x 6'-0"

UPPER LEVEL

- LOFT 14'-6" x 17'-6"
- BEDROOM #1 14'-4" x 21'-0"
- WALK-IN CLOSET 5'-0" x 6'-6"
- BATH #1 12'-8" x 7'-0"
- OFFICE 9'-8" x 14'-0"