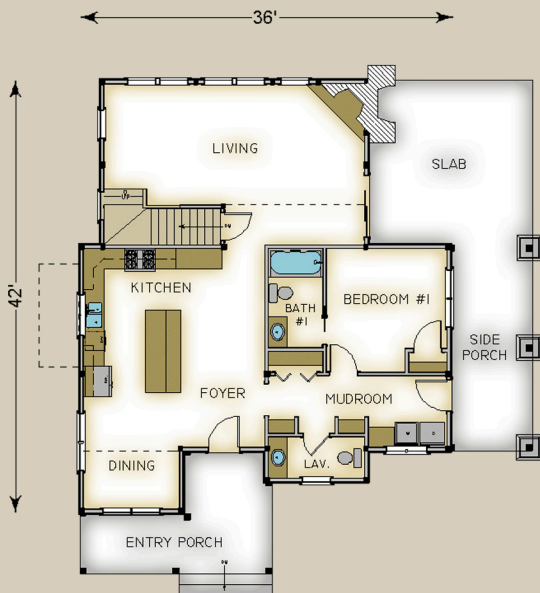


Plan #9108 2190 Total S.F.



**HABITAT FRAME NOTES:**

- BEAMED WALL SYSTEM
- PLASTER AND BEAM MID-FLOOR SYSTEM
- BEAMED ROOF SYSTEM w/TRUSS OVER LIVING ROOM
- BEAMED ROOF SYSTEM OVER ENTRY PORCH
- FLAT LINER CEILING OVER SIDE PORCH
- CONVENTIONAL ROOF SYSTEM w/TIMBER COLLAR TIES OVER UPPER LEVEL
- CONVENTIONAL ROOF OVER DINING BUMP OUT
- 2'-0" OVERHANGS THROUGH OUT
- 9'-0" PLATE BEAM HEIGHT IN LIVING ROOM
- 8x8 PORCH POSTS

**MAIN LEVEL**

- FOYER 8'-0" x 5'-0"
- MUDROOM 17'-6" x 5'-0"
- LAV. 7'-4" x 3'-5"
- DINING 9'-6" x 10'-6"
- KITCHEN 17'-6" x 14'-6"
- LIVING 25'-6" x 16'-0"
- BEDROOM #1 12'-0" x 12'-0"
- BATH #1 5'-0" x 9'-6"
- ENTRY PORCH 18'-6" x 6'-0"
- SIDE PORCH 8'-0" x 20'-0"
- SLAB 16'-0" x 16'-0"

**UPPER LEVEL**

- BEDROOM #2 13'-0" x 17'-0"
- MASTER BEDROOM 21'-6" x 11'-6"
- MASTER BATH 13'-6" x 7'-6"
- WALK-IN CLOSET 7'-6" x 7'-6"
- BATH #2 8'-0" x 10'-0"