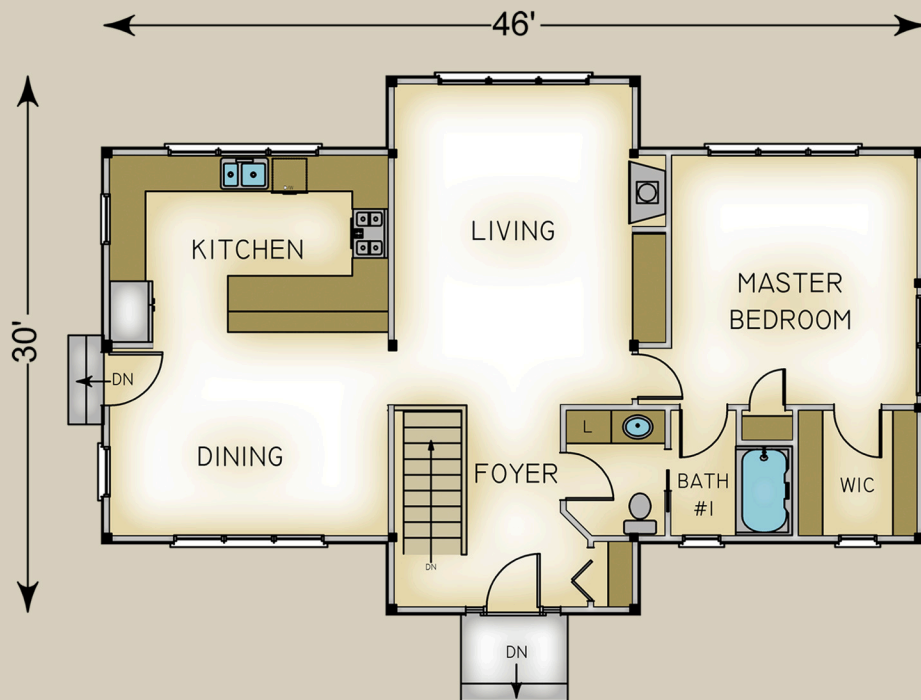


Elm Station 1124 Total S.F.



HABITAT FRAME NOTES:

- BEAMED WALL SYSTEM
- BEAMED ROOF SYSTEM OVER LIVING, FOYER, KITCHEN AND DINING
- PLASTER & ACCENT BEAM ROOF SYSTEM
- w/COLLAR TIES OVER MASTER SUITE
- 10'-0" PLATE BEAM THROUGH OUT
- 8'-0" PLATE BEAM HEIGHT IN LIVING ROOM GABLE WALL
- 2'-0" OVERHANGS THROUGH OUT

MAIN LEVEL

KITCHEN	15'-8" x 10'-6"
DINING	15'-8" x 10'-6"
LIVING	13'-4" x 14'-6"
FOYER	5'-6" x 11'-0"
MASTER BEDROOM	13'-9" x 14'-0"
BATH #1	9'-6" x 7'-0"
WALK-IN CLOSET	6'-8" x 7'-0"