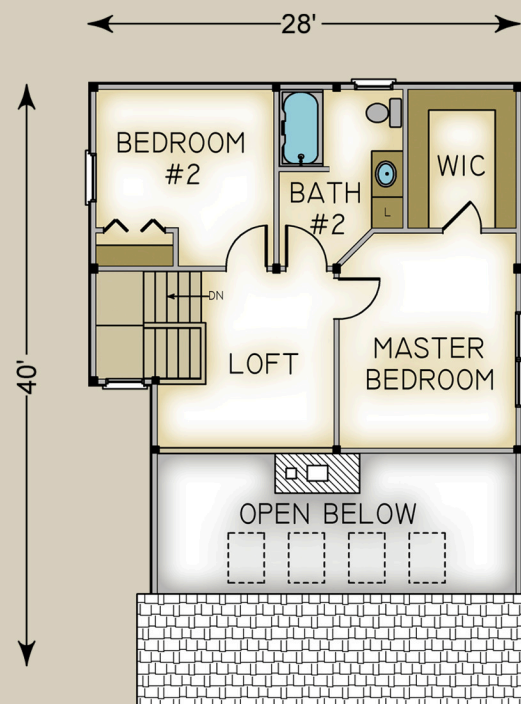
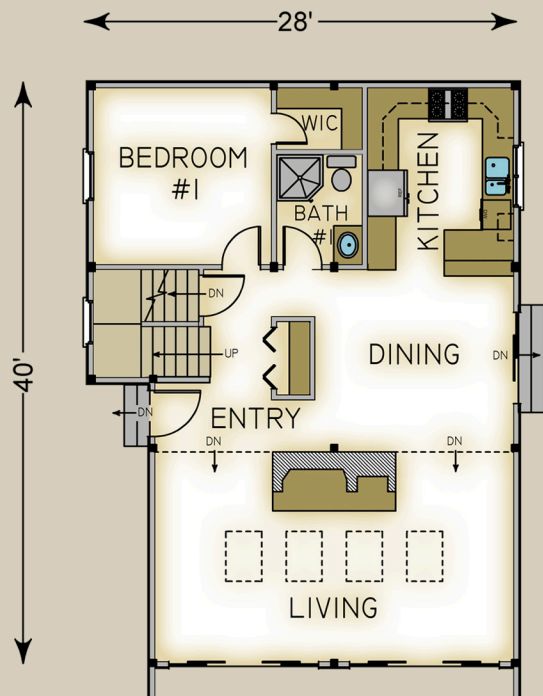


*Passive Solar 1600* 1632 Total S.F.



**HABITAT FRAME NOTES:**

- BEAMED WALL SYSTEM
- BEAMED MID-FLOOR SYSTEM
- BEAMED ROOF SYSTEM OVER LIVING
- PLASTER & ACCENT BEAM ROOF SYSTEM OVER UPPER LEVEL
- 7" STEP DOWN INTO LIVING

**MAIN LEVEL**

LIVING ROOM	24'-0" x 13'-6"
KITCHEN	9'-6" x 12'-0"
DINING ROOM	13'-0" x 11'-0"
ENTRY	7'-6" x 4'-6"
BEDROOM #1	12'-0" x 11'-6"
WALK-IN CLOSET	5'-6" x 4'-0"
BATH #1	5'-6" x 7'-0"

**UPPER LEVEL**

BEDROOM #2	11'-6" x 11'-6"
MASTER BEDROOM	11'-6" x 14'-0"
WALK-IN CLOSET	7'-0" x 9'-0"
BATH #2	8'-0" x 9'-0"