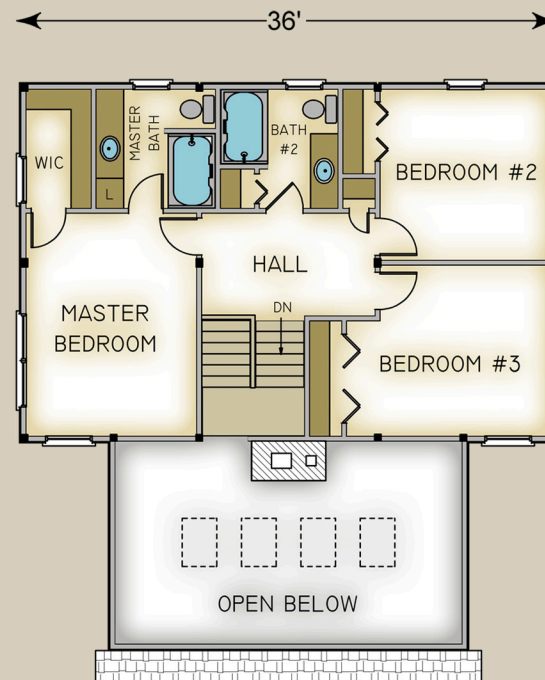
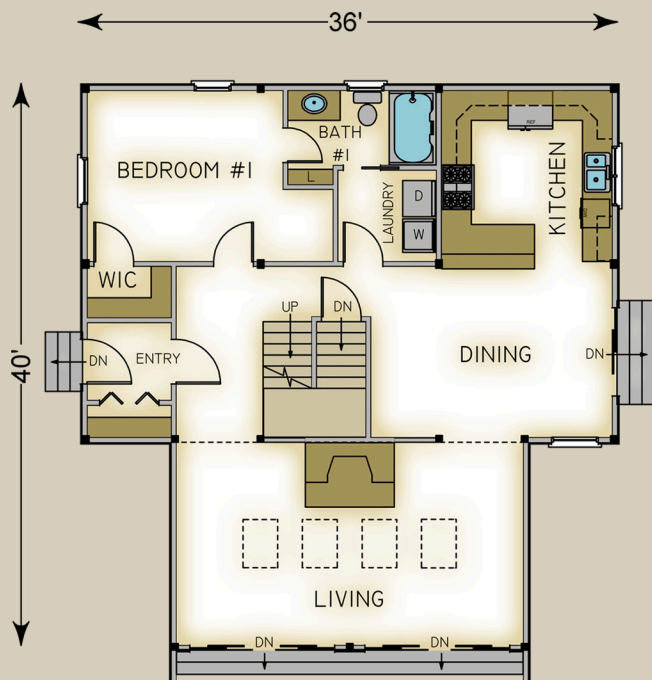


Passive Solar 2000 2064 Total S.F.



HABITAT FRAME NOTES:

- BEAMED WALL SYSTEM
- BEAMED MID-FLOOR SYSTEM
- PLASTER AND ACCENT BEAM ROOF SYSTEM
- w/FLAT CEILINGS OVER UPPER LEVEL
- BEAMED ROOF SYSTEM OVER LIVING

MAIN LEVEL

LIVING ROOM	24'-0" x 14'-0"
KITCHEN	11'-6" x 13'-0"
DINING ROOM	16'-0" x 10'-0"
LAUNDRY	6'-6" x 6'-0"
ENTRY	6'-0" x 5'-0"
BEDROOM #1	13'-6" x 11'-6"
WALK-IN CLOSET	6'-0" x 3'-6"
BATH #1	10'-0" x 5'-0"

UPPER LEVEL

BEDROOM #2	11'-6" x 11'-6"
BEDROOM #3	13'-6" x 11'-6"
MASTER BEDROOM	11'-6" x 15'-0"
WALK-IN CLOSET	4'-6" x 8'-0"
MASTER BATH	8'-0" x 8'-0"
BATH #2	8'-0" x 8'-0"