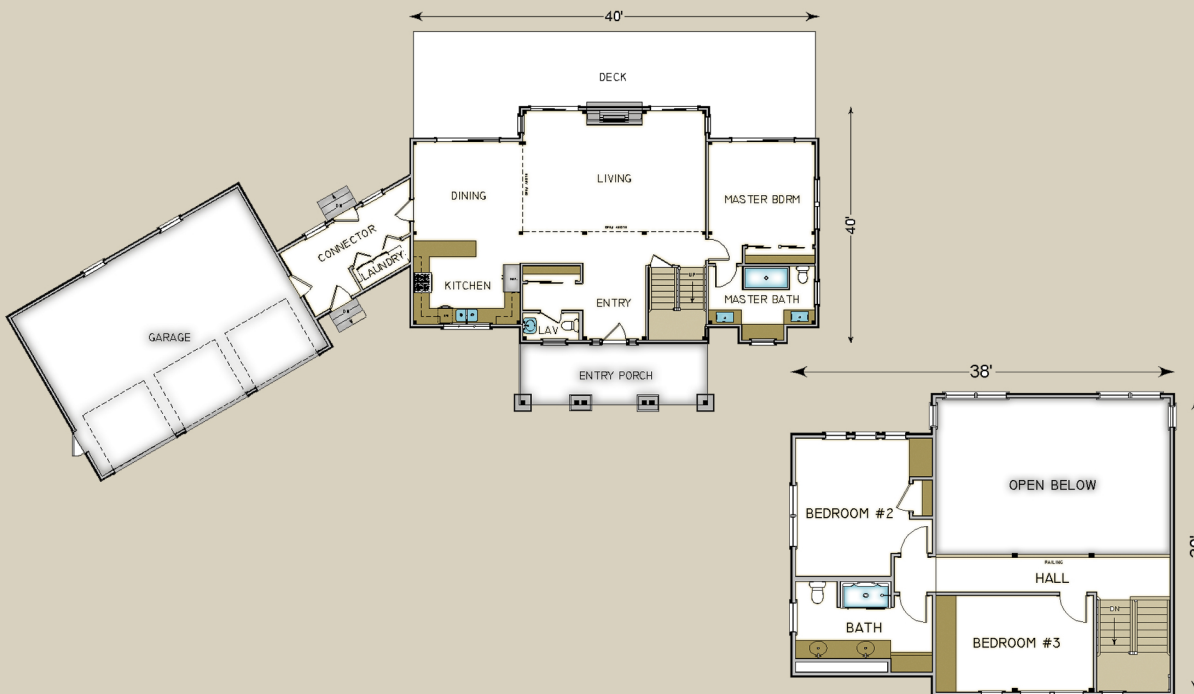


Plan #3882 2358 Total S.F.



HABITAT FRAME NOTES:

- FULL EXPOSURE WALL SYSTEM IN CENTER SECTION
- BEAMED WALL SYSTEM IN WINGS
- PLASTER AND BEAM MID-FLOOR SYSTEM
- 9'-0" MAIN LEVEL PLATE BEAM HEIGHT
- BEAMED ROOF SYSTEM w/COLLAR TIES OVER CENTER SECTION
- PLASTER AND ACCENT BEAM ROOF SYSTEM OVER WINGS
- FLAT LINER ROOF SYSTEM OVER PORCHES

MAIN LEVEL

- KITCHEN 13'-8" x 11'-5"
- DINING 13'-10" x 11'-11"
- LIVING 23'-6" x 16'-0"
- ENTRY 15'-8" x 13'-3"
- LAV. 7'-0" x 3'-5"
- MASTER BEDROOM 13'-8" x 13'-3"
- MASTER BATH 13'-8" x 6'-5"
- ENTRY 15'-8" x 13'-3"
- ENTRY PORCH 24'-0" x 7'-10"
- CONNECTOR 17'-6" x 6'-0"
- LAUNDRY 7'-8" x 2'-11"
- SUN DECKS BY OTHERS

UPPER LEVEL

- BEDROOM #2 11'-4" x 13'-9"
- BATH 13'-8" x 7'-8"
- BEDROOM #3 15'-8" x 9'-7"
- HALL 27'-6" x 3'-9"